



# archer<sup>2</sup><sup>TM</sup>

Wherever Your Job Takes You



## The Ultimate Rugged Handheld

From the hammer and anvil, the Archer 2 has emerged faster, smarter, and more sophisticated than ever before, claiming top spot for the most advanced rugged handheld out there. Specifically designed to boost productivity and speed, the Archer 2 was made for professionals who don't have time to mess around. So whether you're collecting GIS data, researching migration routes, or mapping wildland fires, the Archer 2 will be your reliable companion, wherever your job takes you.



1132 West 1700 North, Logan, Utah 84321 USA

# Archer 2™ Rugged Handheld

## Gets the Job Done

The Archer 2 makes life easier by eliminating the obstacles that keep you from doing your job. With new IllumiView™ technology, its brilliant display overpowers glaring sunlight unlike anything you've ever seen on a rugged handheld. You'll love the responsiveness of its large, glove-friendly capacitive touchscreen and numeric keypad, allowing you to input data at unprecedented speeds. And for those days that run extra-long, rest assured that the Archer 2's custom Overtime Technology™ battery will get you through, no problem. Add to this the signature ruggedness that Juniper Systems is known for, and you have one mean data-collecting machine that you can depend on, wherever your job takes you.



### ILLUMIVIEW™ HIGH-VISIBILITY DISPLAY

- Extra-large display for easy viewing
- Unparalleled brightness overpowers glaring sunlight
- Extremely scratch-resistant
- Capacitive touchscreen provides sharper image & durability
- Hold-to-zoom™ gives you absolute precision

### PERFORMANCE

- Microsoft® Windows Embedded Handheld 6.5.3
- Speedy 1.0GHz processor
- Loads of memory – 512MB RAM & 8GB flash storage



### OVERTIME TECHNOLOGY™ BATTERY

- Intelligent Li-Ion battery – 10600mAh 3.7V
- Outstanding battery life runs long into overtime
- Operates in extreme temperatures from -22F to 140F (-30C to 60C)

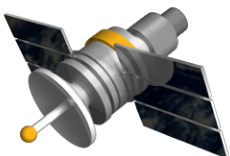
### JUNIPER RUGGED™

- Your data has never been so well-protected
- Dustproof & waterproof (IP68 rating)
- Designed to MIL-STD-810G
- 2-year warranty



### IT'S GOT IT ALL

- 1D/2D barcode imager
- Bluetooth®, Wi-Fi®, cell modem, serial, & USB connectivity
- Simultaneous GPS and GLONASS capabilities
- 5MP camera + video capture



## Applications

- Natural Resources
- Industrial
- Geomatics
- GIS Mapping
- Asset Management
- Public Works
- Agriculture
- Military



For partnership inquiries, please contact Juniper Systems at [sales@junipersys.com](mailto:sales@junipersys.com)

